



The School District of Osceola County, Florida  
817 Bill Beck Boulevard  
Kissimmee, FL 34744  
407-870-4600  
[www.osceolaschools.net](http://www.osceolaschools.net)

# 2023/2024 Districtwide Redistricting for Elementary, Middle, and Combination Schools

## K-8 School “BB”

Prepared by the Planning Services Department  
809A Bill Beck Boulevard  
Kissimmee, FL 34744  
407-518-2964

Date: December 11, 2023

# TABLE OF CONTENTS

2023/2024 Districtwide Redistricting  
for Elementary, Middle, and  
Combination Schools

K-8 School “BB”

<b>Section</b>	<b>Page</b>
Guidelines for Establishing Redistricting Committee and Calendar for Establishing Attendance Zones	3
Public Hearing Notice for Elementary, Combination, and Middle Schools	6
Study Areas	8
Five Year Projections	17
2024/2025 Proposed K8 “BB”, Elementary, and Middle School Boundaries	21
Proposed Streets to Transfer	30



2023/2024 Districtwide Redistricting  
for Elementary, Middle, and  
Combination Schools

K-8 School "BB"

# Guidelines for Establishing Redistricting Committee and Calendar for Establishing Attendance Zones

# **THE SCHOOL BOARD OF OSCEOLA COUNTY, FLORIDA**

## **Guidelines for Establishing Redistricting Committees**

### **SCHOOL COMMITTEES**

**A redistricting committee representing each school involved in the redistricting process shall be established by the School Advisory Council at each affected school.**

**Each school committee shall be broadly representative of the school community.**

**Each school committee shall be composed of five members, one of which shall be an administrator at the school. No more than one of the four remaining members of the committee shall be an employee of the School District of Osceola County.**

### **DISTRICTWIDE COMMITTEE**

**There shall be a Districtwide Committee established. The structure of the committee shall be as follows:**

- 1. Superintendent;**
- 2. Chief of Staff for Human Resources & Student Services, or designee;**
- 3. Assistant Superintendents for Elementary, Middle, and High School Curriculum & Instruction, or designees;**
- 4. Assistant Superintendent for School Operations, or designee;**
- 5. Chief Financial Officer for Business & Finance, or designee;**
- 6. Chief Facilities Officer, or designee; (Non-Voting)**
- 7. Director of Transportation, or designee; and**
- 8. Designated Principals impacted by the redistricting process and their 5-member committees.**

**THE SCHOOL BOARD  
OF  
OSCEOLA COUNTY, FLORIDA**

**Calendar for Establishing Attendance Zones  
for K-8 School “BB”, Central Avenue Elementary, Flora Ridge Elementary, Island Village  
Elementary, Reedy Creek Elementary, Sunrise Elementary, Horizon Middle, and  
Kissimmee Middle Schools  
for the 2024/2025 School Year**

- |   |  |
|---|--|
| <b>July 2022 – October 2023</b>               | <b>Staff, Principals, and School Advisory Committees meet to discuss attendance zones for K-8 School “BB”, Central Avenue Elementary, Flora Ridge Elementary, Island Village Elementary, Reedy Creek Elementary, Sunrise Elementary, Horizon Middle, and Kissimmee Middle Schools.</b> |
| <b>November 14, 2023</b>                      | <b>School Board meets to set calendar, to adopt guidelines, and to determine if any additional schools will be considered for redistricting this year.</b>   |
| <b>December 4, 2023<br/>December 11, 2023</b> | <b>Districtwide Redistricting Committee meets to review data, determine additional needs, and to prepare preliminary plans. Meeting to be held at 6:00 P.M. at the Transportation Department, International Room, 401 Simpson Road, Kissimmee, FL.</b>                                 |
| <b>January 5, 2024<br/>January 7, 2024</b>    | <b>Public Hearing Notice to Advertise</b>  |
| <b>January 23, 2024</b>                       | <b>Public Hearing to adopt elementary school attendance zone boundaries for the 2024/2025 school year to be held at 6:00 P.M. at the Administrative Complex, 817 Bill Beck Boulevard, Kissimmee, FL.</b>   |
| <b>Note:</b>                                  | <b>Additional meetings may be scheduled if necessary or scheduled meetings may be cancelled if they are not required. Dates are subject to change if additional meetings are scheduled or if scheduled meetings are cancelled.</b>   |

**All proposed attendance zone boundaries can be viewed at each respective school or by visiting, <https://www.osceolaschools.net/Page/10302> clicking on Districtwide Redistricting Documents and then clicking K-8 School “BB”, Central Avenue Elementary, Flora Ridge Elementary, Island Village Elementary, Reedy Creek Elementary, Sunrise Elementary, Horizon Middle, and Kissimmee Middle Schools Redistricting.**



2023/2024 Districtwide Redistricting  
for Elementary, Middle, and  
Combination Schools

K-8 School "BB"

# Public Hearing Notice for Elementary, Combination, and Middle Schools

**Proposals for Attendance Zones  
for Elementary, Middle, and Combination Schools  
for the 2024/2025 School Year  
Osceola District Schools**

With the opening of two new schools, and in an attempt to balance school populations, twelve existing schools serving the Kissimmee and St. Cloud areas could be affected by redistricting changes.

Representatives (parents and staff) of the existing eight elementary schools, and four middle schools, along with district staff were involved in the preparation of the accompanying information.

The School Board of Osceola County will hold a Public Hearing and adopt a plan for attendance zones for the 2024/2025 School Year for the following schools:

- Grades K-5:** Central Avenue Elementary, Flora Ridge Elementary, Harmony Community School, Hickory Tree Elementary, Island Village Elementary, Narcoossee Elementary, Reedy Creek Elementary, and Sunrise Elementary
- Grades 6-8:** Harmony Middle, Horizon Middle, Kissimmee Middle, and Narcoossee Middle
- Grades K-8:** K-8 School “BB” and K-8 School “CC”

The Public Hearing is as follows:

**Public Hearing 6:00 P.M.  
January 23, 2024  
Central Administrative Center  
Board Room  
817 Bill Beck Boulevard  
Kissimmee, Florida 34741**

All proposed attendance zone boundaries can be viewed at each respective school or by visiting, <https://www.osceolaschools.net/Page/10302> clicking on Districtwide Redistricting Documents and then clicking either:

**K-8 School “BB”, Central Avenue Elementary, Flora Ridge Elementary, Island Village Elementary, Reedy Creek Elementary, Sunrise Elementary, Horizon Middle, and Kissimmee Middle Schools Redistricting**

**K-8 School “CC”, Harmony Community Elementary, Hickory Tree Elementary, Narcoossee Elementary, Harmony Middle, and Narcoossee Middle Schools Redistricting.**

**Osceola Star: January 5, 2024  
Orlando Sentinel: January 7, 2024**



2023/2024 Districtwide Redistricting  
for Elementary, Middle, and  
Combination Schools

K-8 School "BB"

## Study Areas



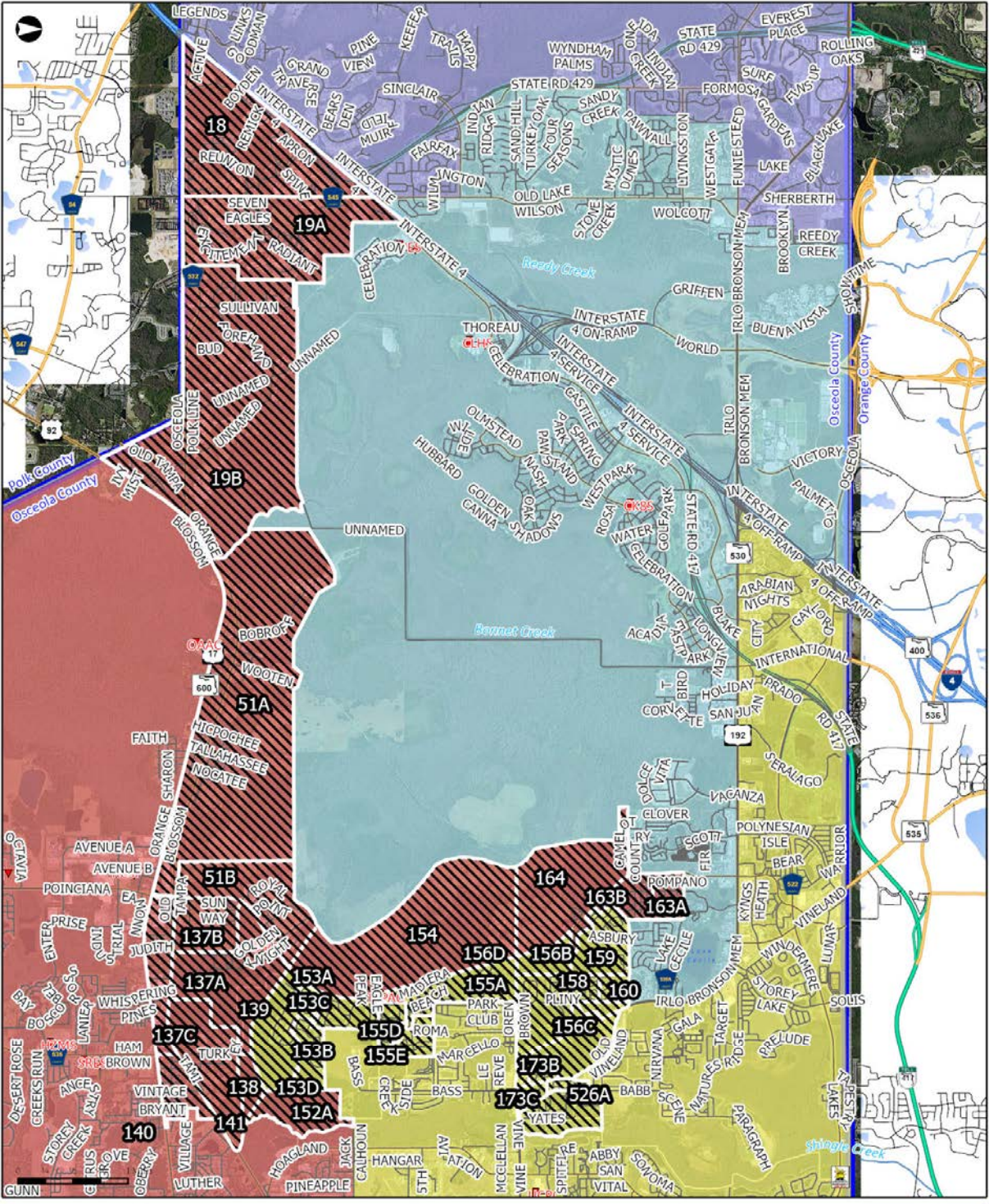
### Focus Area Demographics – K-8 “BB”

<i>Proposed School by Study Area</i>				
<i>Study Area</i>	<i>Current K-5 School</i>	<i>Proposed K-5 School</i>	<i>Current 6-8 School</i>	<i>Proposed 6-8 School</i>
156C	Central Avenue Elementary	K8 School “BB”	Kissimmee Middle	K8 School “BB”
156D	Central Avenue Elementary	K8 School “BB”	Kissimmee Middle	K8 School “BB”
155D	Central Avenue Elementary	K8 School “BB”	Kissimmee Middle	K8 School “BB”
155E	Central Avenue Elementary	K8 School “BB”	Kissimmee Middle	K8 School “BB”
156A	Flora Ridge Elementary	K8 School “BB”	Kissimmee Middle	K8 School “BB”
156B	Flora Ridge Elementary	K8 School “BB”	Kissimmee Middle	K8 School “BB”
158	Flora Ridge Elementary	K8 School “BB”	Kissimmee Middle	K8 School “BB”
159	Flora Ridge Elementary	K8 School “BB”	Kissimmee Middle	K8 School “BB”
160	Flora Ridge Elementary	K8 School “BB”	Kissimmee Middle	K8 School “BB”
173A	Flora Ridge Elementary	K8 School “BB”	Kissimmee Middle	K8 School “BB”
173B	Flora Ridge Elementary	K8 School “BB”	Kissimmee Middle	K8 School “BB”
173C	Flora Ridge Elementary	K8 School “BB”	Kissimmee Middle	K8 School “BB”
526A	Flora Ridge Elementary	K8 School “BB”	Kissimmee Middle	K8 School “BB”
526B	Flora Ridge Elementary	K8 School “BB”	Kissimmee Middle	K8 School “BB”
137A	Sunrise Elementary	K8 School “BB”	Horizon Middle	K8 School “BB”
137B	Sunrise Elementary	K8 School “BB”	Horizon Middle	K8 School “BB”
137C	Sunrise Elementary	K8 School “BB”	Horizon Middle	K8 School “BB”
138	Sunrise Elementary	K8 School “BB”	Horizon Middle	K8 School “BB”
139	Sunrise Elementary	K8 School “BB”	Horizon Middle	K8 School “BB”
140	Sunrise Elementary	K8 School “BB”	Horizon Middle	K8 School “BB”
141	Sunrise Elementary	K8 School “BB”	Horizon Middle	K8 School “BB”
152A	Sunrise Elementary	K8 School “BB”	Horizon Middle	K8 School “BB”
153A	Sunrise Elementary	K8 School “BB”	Kissimmee Middle	K8 School “BB”
153B	Sunrise Elementary	K8 School “BB”	Kissimmee Middle	K8 School “BB”
153C	Sunrise Elementary	K8 School “BB”	Kissimmee Middle	K8 School “BB”
153D	Sunrise Elementary	K8 School “BB”	Kissimmee Middle	K8 School “BB”
155A	Sunrise Elementary	K8 School “BB”	Kissimmee Middle	K8 School “BB”
18	Reedy Creek Elementary	K8 School “BB”	Horizon Middle	K8 School “BB”
19A	Reedy Creek Elementary	K8 School “BB”	Horizon Middle	K8 School “BB”
19B	Reedy Creek Elementary	K8 School “BB”	Horizon Middle	K8 School “BB”
51A	Reedy Creek Elementary	K8 School “BB”	Horizon Middle	K8 School “BB”
51B	Reedy Creek Elementary	K8 School “BB”	Horizon Middle	K8 School “BB”
154	Reedy Creek Elementary	K8 School “BB”	Horizon Middle	K8 School “BB”
163A	Reedy Creek Elementary	K8 School “BB”	Horizon Middle	K8 School “BB”
163B	Reedy Creek Elementary	K8 School “BB”	Horizon Middle	K8 School “BB”
164	Reedy Creek Elementary	K8 School “BB”	Horizon Middle	K8 School “BB”
45	Reedy Creek Elementary	Island Village Elementary	Kissimmee Middle	Kissimmee Middle
47	Reedy Creek Elementary	Island Village Elementary	Kissimmee Middle	Kissimmee Middle
46A	Reedy Creek Elementary	Island Village Elementary	Kissimmee Middle	Kissimmee Middle
46B	Reedy Creek Elementary	Island Village Elementary	Kissimmee Middle	Kissimmee Middle
167A	Reedy Creek Elementary	Island Village Elementary	Kissimmee Middle	Kissimmee Middle
167B	Reedy Creek Elementary	Island Village Elementary	Kissimmee Middle	Kissimmee Middle
167C	Reedy Creek Elementary	Island Village Elementary	Kissimmee Middle	Kissimmee Middle
168	Reedy Creek Elementary	Island Village Elementary	Kissimmee Middle	Kissimmee Middle
170	Reedy Creek Elementary	Island Village Elementary	Kissimmee Middle	Kissimmee Middle









**Proposed K-8 'BB', Horizon Middle, and Kissimmee Middle School Attendance Boundaries**

Draft redistricting proposed for Neighborhood School Opening SY2425

**Planning Services Department**  
The School District of Osceola County, FL

Schools	Final_Centerlines
Proposed to K-8 "BB"	Celebration K8 School
	Horizon Middle
	Kissimmee Middle
	Westside K8 School

**Disclaimer:** All data, information, and maps are provided "as is" without any warranty or representation of accuracy, timeliness, or completeness. The School District of Osceola County, Florida (the "School District") neither accepts any responsibility for errors, omissions, or potential inaccuracies. The School District specifically disclaims any warranty, whether express or implied, including, without limitation, the implied warranties of merchantability and fitness for a particular purpose. The burden of determining accuracy, timeliness, merchantability, and fitness for a particular use rests solely on the requester, and the requester assumes all risks as to quality and performance. In no event will the School District or its staff be liable for any direct, indirect, incidental, special, consequential, or other damages, including without limitation, loss of profits, arising out of the use of the data, information, and maps even if the School District has been advised of the possibility of such damages. The requester acknowledges and accepts the limitations of the data, information, and maps, including, without limitation, the fact that the data, information, and maps are dynamic and are in a constant state of maintenance, correction, and update.

## Focus Area Demographics – K-8 “BB”

Study Area Current Students - From October 2023 FTE Counts									
Study Area	1st	2nd	3rd	4th	5th	6th	7th	8th	Total
156C	1	2	6	2	4	3	3	1	22
156D	2	5	6	3	6	5	5	10	42
155D	4	4	6	12	4	16	6	16	68
155E	8	9	13	10	11	10	10	12	83
156A	-	1	1	4	-	2	-	2	10
156B	-	-	-	-	-	-	-	-	0
158	10	11	18	15	8	18	20	6	106
159	7	13	6	5	9	7	7	8	62
160	7	7	12	5	7	12	11	9	70
173A	8	3	7	3	9	5	5	7	47
173B	5	14	8	15	7	5	8	10	72
173C	8	6	7	5	12	9	6	12	65
526A	13	25	22	27	19	15	26	21	168
526B	9	9	7	6	7	8	6	9	61
137A	-	-	-	-	-	-	-	-	0
137B	-	-	-	-	-	-	-	-	0
137C	3	-	4	2	3	4	3	5	24
138	-	-	-	-	-	-	-	-	0
139	-	-	-	-	-	1	-	2	3
140	4	7	5	5	6	2	3	1	33
141	-	-	-	-	-	-	-	-	0
152A	-	-	-	-	-	-	-	-	0
153A	8	17	10	10	7	16	13	10	91
153B	8	12	8	8	8	7	9	8	68
153C	10	11	10	15	16	13	12	12	99
153D	4	3	5	4	4	4	7	7	38
155A	6	5	6	8	8	10	12	7	62
18	5	2	3	4	2	6	4	4	30
19A	2	4	3	4	2	1	2	3	21
19B	5	7	5	6	4	3	3	7	40
51A	4	8	9	13	6	6	8	10	64
51B	10	10	12	8	14	16	11	14	95
154	-	-	-	-	-	-	-	-	0
163A	11	7	12	5	7	12	9	14	77
163B	6	9	2	4	3	5	6	4	39
164	7	13	11	7	9	10	6	7	70
45*	8	10	9	12	11	N/A	N/A	N/A	50
47*	9	9	11	15	15	N/A	N/A	N/A	59
46A*	-	-	-	-	-	N/A	N/A	N/A	0
46B*	11	8	12	9	15	N/A	N/A	N/A	55
167A*	5	6	6	5	8	N/A	N/A	N/A	30
167B*	7	8	10	5	5	N/A	N/A	N/A	35
167C*	7	6	10	9	8	N/A	N/A	N/A	40
168*	9	8	3	4	7	N/A	N/A	N/A	31
170*	3	3	2	3	4	N/A	N/A	N/A	15
<b>Total</b>	<b>234</b>	<b>282</b>	<b>287</b>	<b>277</b>	<b>275</b>	<b>231</b>	<b>221</b>	<b>238</b>	<b>2045</b>

\*176 students currently attending Kissimmee Middle will continue to attend Kissimmee Middle after redistricting. These students were intentionally omitted from the above chart.





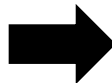
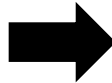
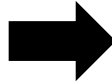
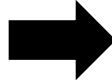
**Focus Area Demographics – K-8 “BB” (October 2023 FTE)**

<b>Central Avenue Elementary</b>						
<i>Study Area</i>	<i>1st</i>	<i>2nd</i>	<i>3rd</i>	<i>4th</i>	<i>5th</i>	<i>Total</i>
<i>156C</i>	1	2	6	2	4	<b>15</b>
<i>156D</i>	2	5	6	3	6	<b>22</b>
<i>155D</i>	4	4	6	12	4	<b>30</b>
<i>155E</i>	8	9	13	10	11	<b>51</b>
<b>Total</b>	<b>15</b>	<b>20</b>	<b>31</b>	<b>27</b>	<b>25</b>	<b>118</b>

<b>Flora Ridge Elementary</b>						
<i>Study Area</i>	<i>1st</i>	<i>2nd</i>	<i>3rd</i>	<i>4th</i>	<i>5th</i>	<i>Total</i>
<i>156A</i>	-	1	1	4	-	<b>6</b>
<i>156B</i>	-	-	-	-	-	<b>0</b>
<i>158</i>	10	11	18	15	8	<b>62</b>
<i>159</i>	7	13	6	5	9	<b>40</b>
<i>160</i>	7	7	12	5	7	<b>38</b>
<i>173A</i>	8	3	7	3	9	<b>30</b>
<i>173B</i>	5	14	8	15	7	<b>49</b>
<i>173C</i>	8	6	7	5	12	<b>38</b>
<i>526A</i>	13	25	22	27	19	<b>106</b>
<i>526B</i>	9	9	7	6	7	<b>38</b>
<b>Total</b>	<b>67</b>	<b>89</b>	<b>88</b>	<b>85</b>	<b>78</b>	<b>407</b>

<b>Sunrise Elementary</b>						
<i>Study Area</i>	<i>1st</i>	<i>2nd</i>	<i>3rd</i>	<i>4th</i>	<i>5th</i>	<i>Total</i>
<i>137A</i>	-	-	-	-	-	<b>0</b>
<i>137B</i>	-	-	-	-	-	<b>0</b>
<i>137C</i>	3	-	4	2	3	<b>12</b>
<i>138</i>	-	-	-	-	-	<b>0</b>
<i>139</i>	-	-	-	-	-	<b>0</b>
<i>140</i>	4	7	5	5	6	<b>27</b>
<i>141</i>	-	-	-	-	-	<b>0</b>
<i>152A</i>	-	-	-	-	-	<b>0</b>
<i>153A</i>	8	17	10	10	7	<b>52</b>
<i>153B</i>	8	12	8	8	8	<b>44</b>
<i>153C</i>	10	11	10	15	16	<b>62</b>
<i>153D</i>	4	3	5	4	4	<b>20</b>
<i>155A</i>	6	5	6	8	8	<b>33</b>
<b>Total</b>	<b>43</b>	<b>55</b>	<b>48</b>	<b>52</b>	<b>52</b>	<b>250</b>

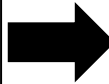
<b>Reedy Creek Elementary</b>						
<i>Study Area</i>	<i>1st</i>	<i>2nd</i>	<i>3rd</i>	<i>4th</i>	<i>5th</i>	<i>Total</i>
<i>18</i>	5	2	3	4	2	<b>16</b>
<i>19A</i>	2	4	3	4	2	<b>15</b>
<i>19B</i>	5	7	5	6	4	<b>27</b>
<i>51A</i>	4	8	9	13	6	<b>40</b>
<i>51B</i>	10	10	12	8	14	<b>54</b>
<i>154</i>	-	-	-	-	-	<b>0</b>
<i>163A</i>	11	7	12	5	7	<b>42</b>
<i>163B</i>	6	9	2	4	3	<b>24</b>
<i>164</i>	7	13	11	7	9	<b>47</b>
<b>Total</b>	<b>50</b>	<b>60</b>	<b>57</b>	<b>51</b>	<b>47</b>	<b>265</b>



<b>K-8 “BB”</b>						
<i>Study Area</i>	<i>1st</i>	<i>2nd</i>	<i>3rd</i>	<i>4th</i>	<i>5th</i>	<i>Total</i>
<i>156C</i>	1	2	6	2	4	<b>15</b>
<i>156D</i>	2	5	6	3	6	<b>22</b>
<i>155D</i>	4	4	6	12	4	<b>30</b>
<i>155E</i>	8	9	13	10	11	<b>51</b>
<i>156A</i>	-	1	1	4	-	<b>6</b>
<i>156B</i>	-	-	-	-	-	<b>0</b>
<i>158</i>	10	11	18	15	8	<b>62</b>
<i>159</i>	7	13	6	5	9	<b>40</b>
<i>160</i>	7	7	12	5	7	<b>38</b>
<i>173A</i>	8	3	7	3	9	<b>30</b>
<i>173B</i>	5	14	8	15	7	<b>49</b>
<i>173C</i>	8	6	7	5	12	<b>38</b>
<i>526A</i>	13	25	22	27	19	<b>106</b>
<i>526B</i>	9	9	7	6	7	<b>38</b>
<i>137A</i>	-	-	-	-	-	<b>0</b>
<i>137B</i>	-	-	-	-	-	<b>0</b>
<i>137C</i>	3	-	4	2	3	<b>12</b>
<i>138</i>	-	-	-	-	-	<b>0</b>
<i>139</i>	-	-	-	-	-	<b>0</b>
<i>140</i>	4	7	5	5	6	<b>27</b>
<i>141</i>	-	-	-	-	-	<b>0</b>
<i>152A</i>	-	-	-	-	-	<b>0</b>
<i>153A</i>	8	17	10	10	7	<b>52</b>
<i>153B</i>	8	12	8	8	8	<b>44</b>
<i>153C</i>	10	11	10	15	16	<b>62</b>
<i>153D</i>	4	3	5	4	4	<b>20</b>
<i>155A</i>	6	5	6	8	8	<b>33</b>
<i>18</i>	5	2	3	4	2	<b>16</b>
<i>19A</i>	2	4	3	4	2	<b>15</b>
<i>19B</i>	5	7	5	6	4	<b>27</b>
<i>51A</i>	4	8	9	13	6	<b>40</b>
<i>51B</i>	10	10	12	8	14	<b>54</b>
<i>154</i>	-	-	-	-	-	<b>0</b>
<i>163A</i>	11	7	12	5	7	<b>42</b>
<i>163B</i>	6	9	2	4	3	<b>24</b>
<i>164</i>	7	13	11	7	9	<b>47</b>
<b>Total</b>	<b>175</b>	<b>224</b>	<b>224</b>	<b>215</b>	<b>202</b>	<b>1040</b>

**Focus Area Demographics – K-8 “BB” (October 2023 FTE)**

<b>Reedy Creek Elementary</b>						
<b>Study Area</b>	<b>1st</b>	<b>2nd</b>	<b>3rd</b>	<b>4th</b>	<b>5th</b>	<b>Total</b>
<b>45</b>	9	9	11	15	15	<b>59</b>
<b>47</b>	3	3	4	2	11	<b>23</b>
<b>46A</b>	-	-	-	-	-	<b>0</b>
<b>46B</b>	11	8	12	9	15	<b>55</b>
<b>167A</b>	5	6	6	5	8	<b>30</b>
<b>167B</b>	7	8	10	5	5	<b>35</b>
<b>167C</b>	7	6	10	9	8	<b>40</b>
<b>168</b>	9	8	3	4	7	<b>31</b>
<b>170</b>	9	8	3	4	7	<b>31</b>
<b>Total</b>	<b>60</b>	<b>56</b>	<b>59</b>	<b>53</b>	<b>76</b>	<b>304</b>



<b>Island Village Elementary</b>						
<b>Study Area</b>	<b>1st</b>	<b>2nd</b>	<b>3rd</b>	<b>4th</b>	<b>5th</b>	<b>Total</b>
<b>45</b>	9	9	11	15	15	<b>59</b>
<b>47</b>	3	3	4	2	11	<b>23</b>
<b>46A</b>	-	-	-	-	-	<b>0</b>
<b>46B</b>	11	8	12	9	15	<b>55</b>
<b>167A</b>	5	6	6	5	8	<b>30</b>
<b>167B</b>	7	8	10	5	5	<b>35</b>
<b>167C</b>	7	6	10	9	8	<b>40</b>
<b>168</b>	9	8	3	4	7	<b>31</b>
<b>170</b>	9	8	3	4	7	<b>31</b>
<b>Total</b>	<b>60</b>	<b>56</b>	<b>59</b>	<b>53</b>	<b>76</b>	<b>304</b>

**Focus Area Demographics – K-8 “BB” (October 2023 FTE)**

<b>Kissimmee Middle</b>				
<b>Study Area</b>	<b>6th</b>	<b>7th</b>	<b>8th</b>	<b>Total</b>
156C	3	3	1	7
156D	5	5	10	20
155D	16	6	16	38
155E	10	10	12	32
156A	2	-	2	4
156B	-	-	-	0
158	18	20	6	44
159	7	7	8	22
160	12	11	8	31
173A	5	5	7	17
173B	5	8	10	23
173C	9	6	12	27
526A	15	26	21	62
526B	8	6	9	23
153A	16	13	10	39
153B	7	9	8	24
153C	13	12	12	37
153D	4	7	7	18
155A	10	12	7	29
<b>Total</b>	<b>165</b>	<b>166</b>	<b>166</b>	<b>497</b>

<b>Horizon Middle</b>				
<b>Study Area</b>	<b>6th</b>	<b>7th</b>	<b>8th</b>	<b>Total</b>
137A	-	-	-	0
137B	-	-	-	0
137C	4	3	5	12
138	-	-	-	0
139	1	-	2	3
140	2	3	1	6
141	-	-	-	0
152A	-	-	-	0
18	6	4	4	14
19A	1	2	3	6
19B	3	3	7	13
51A	6	8	10	24
51B	16	11	14	41
154	-	-	-	0
163A	12	9	14	35
163B	5	6	4	15
164	10	6	7	23
<b>Total</b>	<b>66</b>	<b>55</b>	<b>71</b>	<b>192</b>

<b>Kissimmee Middle*</b>				
<b>Study Area</b>	<b>6th</b>	<b>7th</b>	<b>8th</b>	<b>Total</b>
45	9	14	11	34
47	4	10	8	22
46A	-	-	-	0
46B	7	10	18	35
167A	5	10	15	30
167B	6	5	1	12
167C	11	7	6	24
168	5	4	2	11
170	2	4	2	8
<b>Total</b>	<b>49</b>	<b>64</b>	<b>63</b>	<b>176</b>

<b>K-8 “BB”</b>				
<b>Study Area</b>	<b>6th</b>	<b>7th</b>	<b>8th</b>	<b>Total</b>
156C	3	3	1	7
156D	5	5	10	20
155D	16	6	16	38
155E	10	10	12	32
156A	2	-	2	4
156B	-	-	-	0
158	18	20	6	44
159	7	7	8	22
160	12	11	8	31
173A	5	5	7	17
173B	5	8	10	23
173C	9	6	12	27
526A	15	26	21	62
526B	8	6	9	23
153A	16	13	10	39
153B	7	9	8	24
153C	13	12	12	37
153D	4	7	7	18
155A	10	12	7	29
137A	-	-	-	0
137B	-	-	-	0
137C	4	3	5	12
138	-	-	-	0
139	1	-	2	3
140	2	3	1	6
141	-	-	-	0
152A	-	-	-	0
18	6	4	4	14
19A	1	2	3	6
19B	3	3	7	13
51A	6	8	10	24
51B	16	11	14	41
154	-	-	-	0
163A	12	9	14	35
163B	5	6	4	15
164	10	6	7	23
<b>Total</b>	<b>231</b>	<b>221</b>	<b>237</b>	<b>689</b>

<b>Kissimmee Middle*</b>				
<b>Study Area</b>	<b>6th</b>	<b>7th</b>	<b>8th</b>	<b>Total</b>
45	9	14	11	34
47	4	10	8	22
46A	-	-	-	0
46B	7	10	18	35
167A	5	10	15	30
167B	6	5	1	12
167C	11	7	6	24
168	5	4	2	11
170	2	4	2	8
<b>Total</b>	<b>49</b>	<b>64</b>	<b>63</b>	<b>176</b>

\*176 students currently attending Kissimmee Middle will continue to attend Kissimmee Middle after redistricting.





2023/2024 Districtwide Redistricting  
for Elementary, Middle, and  
Combination Schools

K-8 School "BB"

## Five Year Projections

**Proposed Redistricting from Central Ave. Elementary, Flora Ridge Elementary, Island Village Elementary, Reedy Creek Elementary, Sunrise Elementary, Horizon Middle, and Kissimmee Middle to K8 "BB"  
2023/2024 – 2027/2028**

Year	School	Grades K-8	K			1st			2nd			3rd			4th			5th			Total K-5			6th			7th			8th			Total 6-8			Sub Total K-8			Grand Total K-8			Functional Capacity	Utilization	Functional Capacity W/Portables	Utilization
			Choice	SubTotal	Choice	SubTotal	Choice	SubTotal	Choice	SubTotal	Choice	SubTotal	Choice	SubTotal	Choice	SubTotal	Choice	SubTotal	Choice	SubTotal	Choice	SubTotal	Choice	SubTotal	Choice	SubTotal	Choice	SubTotal	Choice	SubTotal	Choice	SubTotal	Choice	SubTotal	Choice	SubTotal									
ACT 2023/2024	K8 "BB"	0	0	0	0	0	0	0	0	0	0	0	0	0	0	0	0	0	0	0	0	0	0	0	0	0	0	0	0	0	0	0	0	0	0	0	0	0	1,274	0%	1,274	0%			
2024/2025	K8 "BB"	1,763	176	70	106	185	63	122	194	76	118	226	80	146	188	78	110	223	66	157	759	48	807	166	63	103	207	65	142	198	77	121	366	24	390	1,125	72	1,197	1,274	94%	1,274	94%			
2025/2026	K8 "BB"	1,717	171	70	101	181	70	111	182	63	119	191	76	115	223	80	143	192	78	114	703	48	751	192	66	126	171	63	108	214	65	149	383	24	407	1,086	72	1,158	1,274	91%	1,274	91%			
2026/2027	K8 "BB"	1,746	194	70	124	185	70	115	190	70	120	196	63	133	193	76	117	236	80	156	765	48	813	175	78	97	198	66	132	179	63	116	345	24	369	1,110	72	1,182	1,274	93%	1,274	93%			
2027/2028	K8 "BB"	1,766	181	70	111	206	70	136	191	70	121	201	70	131	195	63	132	202	76	126	757	48	805	207	80	127	179	78	101	204	66	138	366	24	390	1,123	72	1,195	1,274	94%	1,274	94%			

Year	School	Grades K-5	K			1			2			3			4			5			SubTotal	OOZ	Grand Total	Functional Capacity	Utilization	Functional Capacity W/Portables	Utilization
			Choice	SubTotal	Choice	SubTotal	Choice	SubTotal	Choice	SubTotal	Choice	SubTotal	Choice	SubTotal	Choice	SubTotal	Choice	SubTotal									
ACT 2023/2024	CAES	1,127	161	87	74	167	100	67	178	114	64	226	123	103	208	120	88	187	98	89	485	64	549	928	59%	928	59%
2024/2025	CAES	1,011	144	71	73	160	91	69	156	100	56	186	103	83	174	98	76	191	82	109	466	64	530	928	57%	928	57%
2025/2026	CAES	1,001	142	71	71	153	71	82	169	91	78	167	100	67	186	103	83	184	98	86	467	64	531	928	57%	928	57%
2026/2027	CAES	977	139	71	68	147	71	76	159	71	88	176	91	85	164	100	64	192	103	89	470	64	534	928	58%	928	58%
2027/2028	CAES	938	143	71	72	142	71	71	150	71	79	164	71	93	171	91	80	168	100	68	463	64	527	928	57%	928	57%

Year	School	Grades K-5	K			1			2			3			4			5			SubTotal	OOZ	Grand Total	Functional Capacity	Utilization	Functional Capacity W/Portables	Utilization
			Choice	SubTotal	Choice	SubTotal	Choice	SubTotal	Choice	SubTotal	Choice	SubTotal	Choice	SubTotal	Choice	SubTotal	Choice	SubTotal									
ACT 2023/2024	FRES	1,670	234	117	117	283	160	123	294	114	180	306	156	150	273	126	147	280	129	151	868	105	973	1,137	86%	1,137	86%
2024/2025	FRES	1,356	214	93	121	234	134	100	223	86	137	225	130	95	245	101	144	215	112	103	700	105	805	1,137	71%	1,137	71%
2025/2026	FRES	1,326	204	93	111	227	93	134	239	134	105	232	82	150	232	130	102	192	101	91	693	105	798	1,137	70%	1,137	70%
2026/2027	FRES	1,366	205	93	112	212	93	119	228	93	135	243	134	109	235	82	153	243	130	113	741	105	846	1,137	74%	1,137	74%
2027/2028	FRES	1,355	208	93	115	208	93	115	209	93	116	228	93	135	243	134	109	259	82	177	767	105	872	1,137	77%	1,137	77%

**Proposed Redistricting from Central Ave. Elementary, Flora Ridge Elementary, Island Village Elementary, Reedy Creek Elementary, Sunrise Elementary, Horizon Middle, and Kissimmee Middle to K8 “BB”  
2023/2024 – 2027/2028**

Year	School	Grades K-5	K	Choice	SubTotal	1	Choice	SubTotal	2	Choice	SubTotal	3	Choice	SubTotal	4	Choice	SubTotal	5	Choice	SubTotal	SubTotal	OOZ	Grand Total	Functional Capacity	Utilization	Functional Capacity W/Portables	Utilization
ACT 2023/2024	IVES	510	90	24	66	81	34	47	96	39	57	83	27	56	80	28	52	80	27	53	331	77	408	948	43%	948	43%
2024/2025	IVES	890	138	40	98	146	50	96	148	60	88	163	47	116	159	53	106	136	49	87	591	77	668	948	70%	948	70%
2025/2026	IVES	930	140	40	100	150	40	110	150	50	100	157	60	97	166	47	119	167	53	114	640	77	717	948	76%	948	76%
2026/2027	IVES	957	158	40	118	152	40	112	154	40	114	159	50	109	159	60	99	175	47	128	680	77	757	948	80%	948	80%
2027/2028	IVES	936	143	40	103	166	40	126	151	40	111	157	40	117	156	50	106	163	60	103	666	77	743	948	78%	948	78%

Year	School	Grades K-5	K	Choice	SubTotal	1	Choice	SubTotal	2	Choice	SubTotal	3	Choice	SubTotal	4	Choice	SubTotal	5	Choice	SubTotal	SubTotal	OOZ	Grand Total	Functional Capacity	Utilization	Functional Capacity W/Portables	Utilization
ACT 2023/2024	RCES	1,293	203	83	120	190	86	104	219	84	135	231	115	116	228	110	118	222	96	126	719	53	772	868	89%	1,036	75%
2024/2025	RCES	583	87	30	57	90	33	57	87	37	50	105	71	34	95	52	43	119	43	76	317	53	370	868	43%	868	43%
2025/2026	RCES	549	82	30	52	91	30	61	91	33	58	93	37	56	97	71	26	95	52	43	296	53	349	868	40%	868	40%
2026/2027	RCES	551	84	30	54	88	30	58	95	30	65	99	33	66	86	37	49	99	71	28	320	53	373	868	43%	868	43%
2027/2028	RCES	556	88	30	58	91	30	61	92	30	62	103	30	73	93	33	60	89	37	52	366	53	419	868	48%	868	48%

Year	School	Grades K-5	K	Choice	SubTotal	1	Choice	SubTotal	2	Choice	SubTotal	3	Choice	SubTotal	4	Choice	SubTotal	5	Choice	SubTotal	SubTotal	OOZ	Grand Total	Functional Capacity	Utilization	Functional Capacity W/Portables	Utilization
ACT 2023/2024	SRES	1,428	205	91	114	251	124	127	250	97	153	231	115	116	254	103	151	237	83	154	815	78	893	1,144	78%	1,210	74%
2024/2025	SRES	1,217	198	62	136	208	97	111	207	62	145	208	82	126	173	71	102	223	49	174	794	78	872	1,144	76%	1,210	72%
2025/2026	SRES	1,321	203	62	141	228	62	166	232	97	135	248	62	186	215	82	133	195	71	124	885	78	963	1,144	84%	1,210	80%
2026/2027	SRES	1,476	225	62	163	234	62	172	250	62	188	266	97	169	259	62	197	242	82	160	1,049	78	1,127	1,144	99%	1,210	93%
2027/2028	SRES	1,589	224	62	162	258	62	196	256	62	194	285	62	223	277	97	180	289	62	227	1,182	78	1,260	1,144	110%	1,210	104%

**Proposed Redistricting from Central Ave. Elementary, Flora Ridge Elementary, Island Village Elementary, Reedy Creek Elementary, Sunrise Elementary, Horizon Middle, and Kissimmee Middle to K8 “BB”  
2023/2024 – 2027/2028**

Year	School	Grades 6-8	6th	Choice	Total	7th	Choice	Total	8th	Choice	Total	SubTotal	OOZ	Grand Total	Functional Capacity	Utilization	Functional Capacity W/Portables	Utilization
ACT 2023/2024	HZMS	1,724	561	239	322	562	216	346	601	241	360	1,028	91	1,119	1,443	78%	1,562	72%
2024/2025	HZMS	1,422	433	214	219	491	195	296	498	204	294	809	91	900	1,443	62%	1,443	62%
2025/2026	HZMS	1,482	524	214	310	444	214	230	514	195	319	859	91	950	1,443	66%	1,443	66%
2026/2027	HZMS	1,482	453	214	239	549	214	335	480	214	266	840	91	931	1,443	65%	1,443	65%
2027/2028	HZMS	1,729	662	214	448	478	214	264	589	214	375	1,087	91	1,178	1,443	82%	1,443	82%

Year	School	Grades 6-8	6th	Choice	Total	7th	Choice	Total	8th	Choice	Total	SubTotal	OOZ	Grand Total	Functional Capacity	Utilization	Functional Capacity W/Portables	Utilization
ACT 2023/2024	KMMS	2,572	842	469	373	844	463	381	886	527	359	1,113	28	1,141	1,382	83%	1,659	69%
2024/2025	KMMS	2,134	700	382	318	744	366	378	690	433	257	953	28	981	1,382	71%	1,514	65%
2025/2026	KMMS	2,107	657	382	275	698	382	316	752	366	386	977	28	1,005	1,382	73%	1,514	66%
2026/2027	KMMS	2,071	712	382	330	642	382	260	717	382	335	925	28	953	1,382	69%	1,514	63%
2027/2028	KMMS	2,005	674	382	292	694	382	312	637	382	255	859	28	887	1,382	64%	1,514	59%

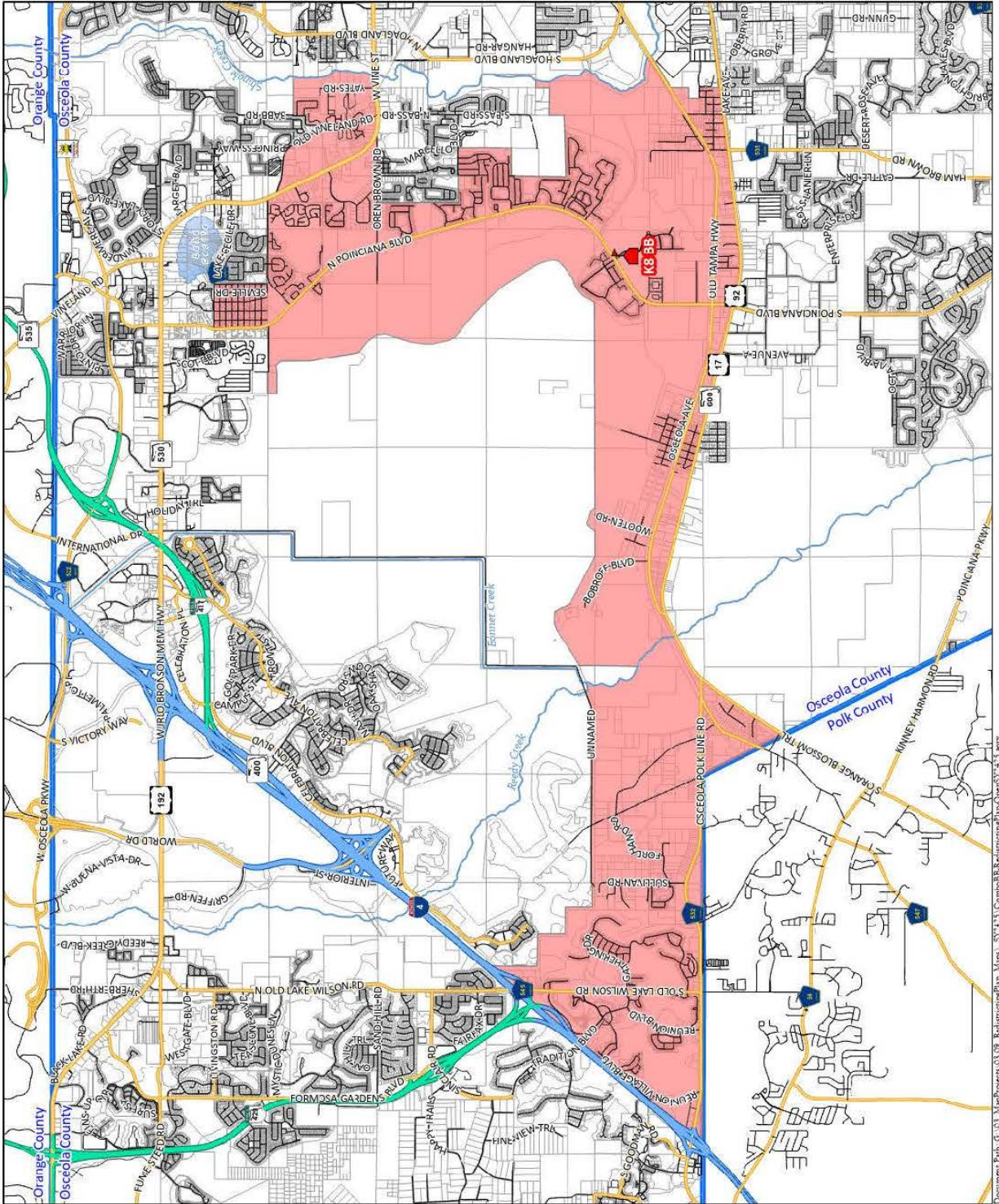


2023/2024 Districtwide Redistricting  
for Elementary, Middle, and  
Combination Schools

K-8 School "BB"

# 2024/2025 Proposed K8 "BB", Elementary, and Middle School Boundaries



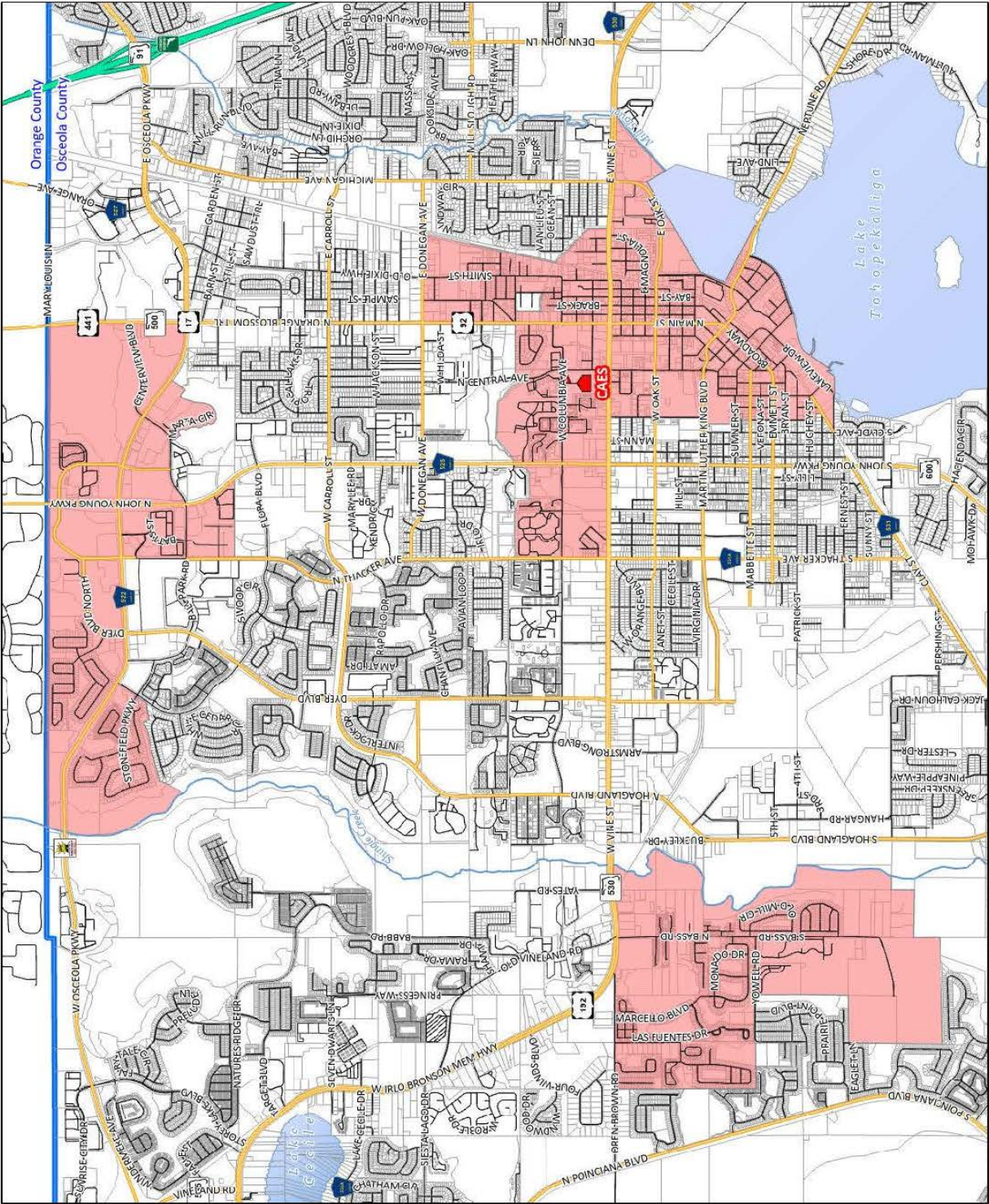


Document Path: G:\03\_Map\Progress\03\_09\_RelimitingPlan\_Maps\_US192123\_CombosBB\_RelimitingPlan\_Opsub17413.aprx

<p><b>K8 "BB" Option 2 Attendance Zone Boundary</b></p>	<ul style="list-style-type: none"> <li> Elementary School</li> <li> Highway</li> <li> Toll Road</li> <li> Major Road</li> <li> Residential Street</li> <li> Attendance Zone Boundary</li> <li> Counties</li> <li> Parcels</li> <li> Administrative Placement Area</li> </ul>	<p><small>Disclaimer: All data, information, and maps are provided "as is" without any warranty or representation of accuracy, timeliness, or completeness. The School District of Osceola County, Florida (the "School District") cannot accept any responsibility for errors, omissions, or provisional accuracy. The School District specifically disclaims any warranty, either express or implied, including, without limitation, the implied warranties of merchantability and fitness for a particular purpose. The burden of determining accuracy, timeliness, merchantability, and fitness for a particular use rests solely on the requestor, and the requestor assumes all risk as to quality and performance. In no event will the School District or its staff be liable for any direct, indirect, incidental, special, consequential, or other damages, including, without limitation, loss of profit, arising out of the use of the data, information, and maps even if the School District has been advised of the possibility of such damages. The requestor acknowledges and accepts the limitations of the data, information, and maps, including, without limitation, the fact that the data, information, and maps are dynamic and are in a constant state of maintenance, correction, and update.</small></p>
<p>Valid only for the 2024/2025 School Year</p> <p> <b>Planning Services Department</b> The School District of Osceola County, FL</p>		

Created By: E. Kossak





**Central Avenue Elementary  
KS'BB Opening Option 2  
Attendance Zone Boundary**

Valid only for the 2024/2025 School Year

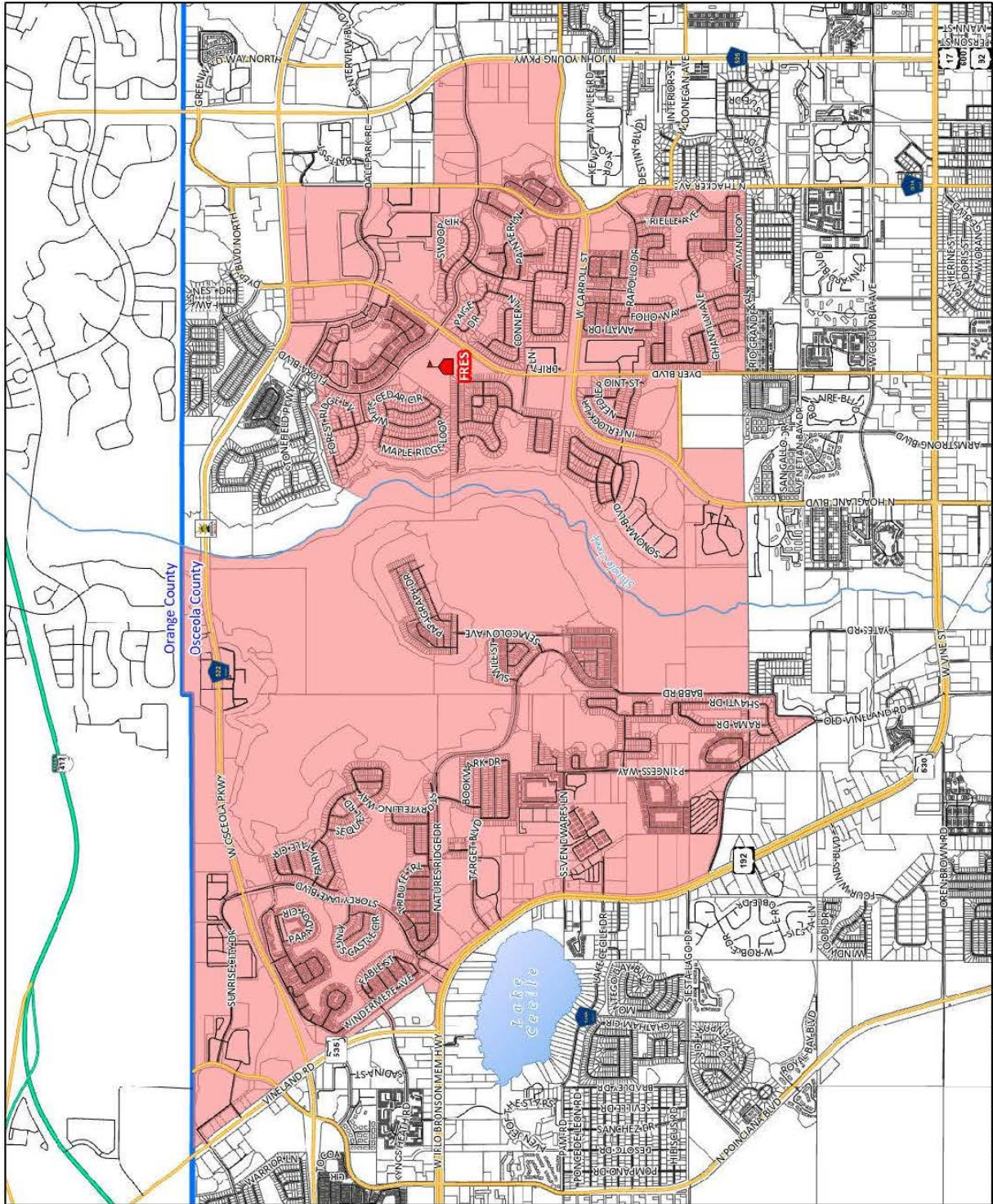
**Planning Services Department**  
The School District of Osceola County, FL

Elementary School	Attendance Zone Boundary
Highway	Counties
Toll Road	Facels
Major Road	Administrative Placement Area
Residential Street	

**Disclaimer:** All data, information, and maps are provided "as is" without any warranty or representation of accuracy, timeliness, or completeness. The School District of Osceola County, Florida (the "School District") cannot accept any responsibility for errors, omissions, or positional accuracy. The School District expressly disclaims any warranty, either express or implied, including, without limitation, the implied warranties of merchantability and fitness for a particular purpose. The burden of determining accuracy, timeliness, merchantability, and fitness for a particular use rests solely on the requestor, and the requestor assumes all risk as to quality and performance. In no event will the School District or its staff be liable for any direct, indirect, special, consequential, or other damages, including, without limitation, loss of profit, arising out of the use of the data, information, and maps even if the School District has been advised of the possibility of such damages. The requestor acknowledges and accepts the limitations of the data, information, and maps, including, without limitation, the fact that the data, information, and maps are dynamic and are in a constant state of maintenance, correction, and update.

Document Path: G:\GIS\MapServer\0309\_MaintenancePlan\_Map\_L21413\_CombosB\AttendanceZone\Open121413.aprx  
Created By: E. Howells

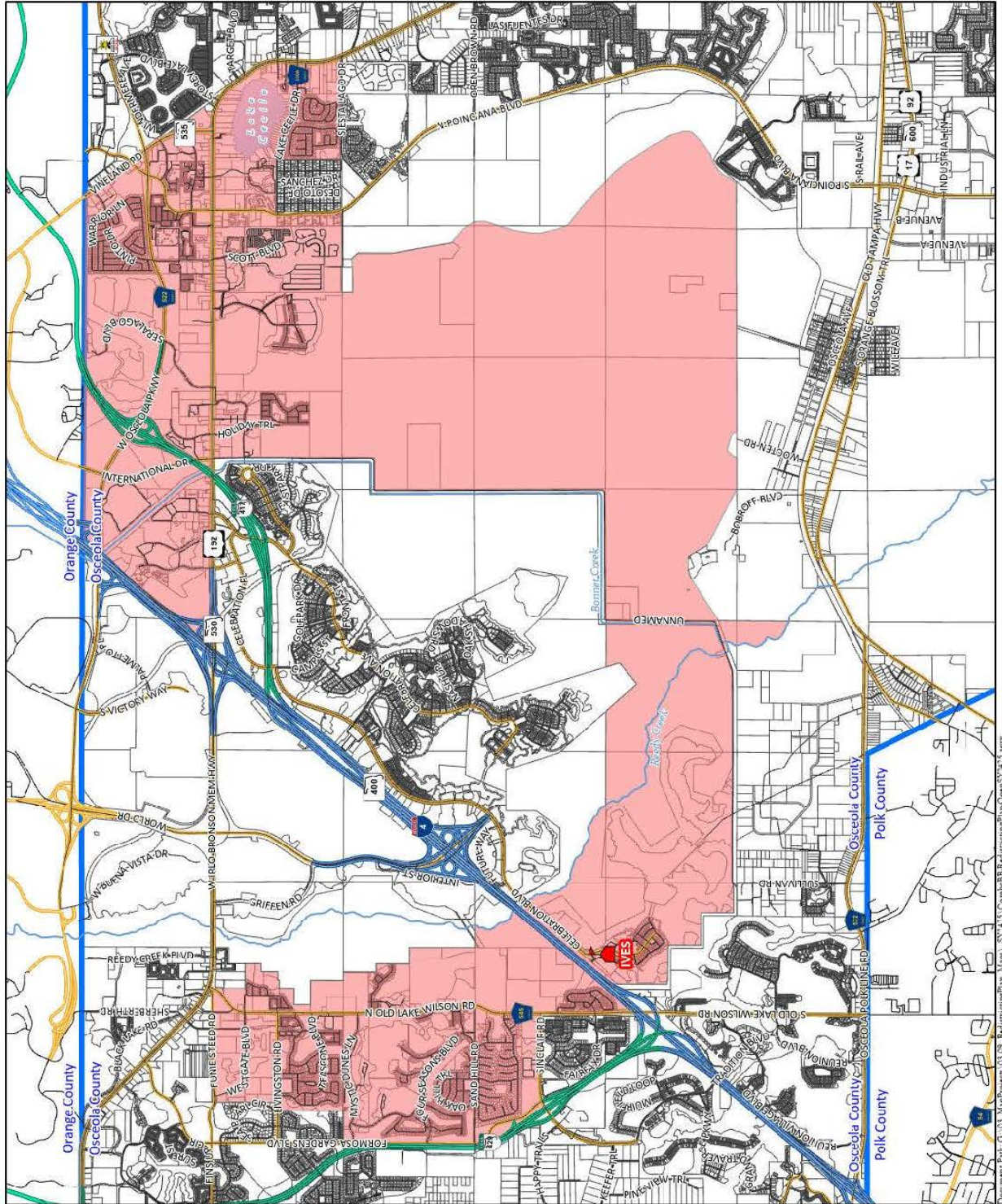




Document Path: G:\03\_Map\Projects\03\_09\_2024\Kas\AttendanceMap\_Opens1243.aprx  
Created By: E. Scudak

<p><b>Flora Ridge Elementary KS'BB' Opening Option2 Attendance Zone Boundary</b></p> <p>Valid only for the 2024/2025 School Year</p> <p><b>Planning Services Department</b> The School District of Osceola County, FL</p>	<p> Elementary School</p> <p> Highway</p> <p> Toll Road</p> <p> Major Road</p> <p> Residential Street</p>	<p> Attendance Zone Boundary</p> <p> Counties</p> <p> Parcels</p> <p> Administrative Placement Area</p>	<p><small>Disclaimer: All data, information, and maps are provided "as is" without any warranty or representation of accuracy, timeliness, or completeness. The School District of Osceola County, Florida (the "School District") cannot accept any responsibility for errors, omissions, or positional accuracy. The School District specifically disclaims any warranty, either express or implied, including without limitation, the implied warranties of merchantability and fitness for a particular purpose. The burden of determining accuracy, timeliness, merchantability, and fitness for a particular use rests solely on the requestor, and the requestor assumes all risk as to quality and performance. In no event will the School District or its staff be liable for any direct, indirect, incidental, special, consequential, or other damages, including without limitation, loss of profit, arising out of the use of the data, information, and maps even if the School District has been advised of the possibility of such damages. The requestor acknowledges and accepts the limitations of the data, information, and maps, including, without limitation, the fact that the data, information, and maps are dynamic and are in a constant state of maintenance, correction, and update.</small></p>
---	---	---	--





**Island Village Elementary  
KS'BB' Opening Option 2  
Attendance Zone Boundary**

Valid only for the 2024/2025 School Year

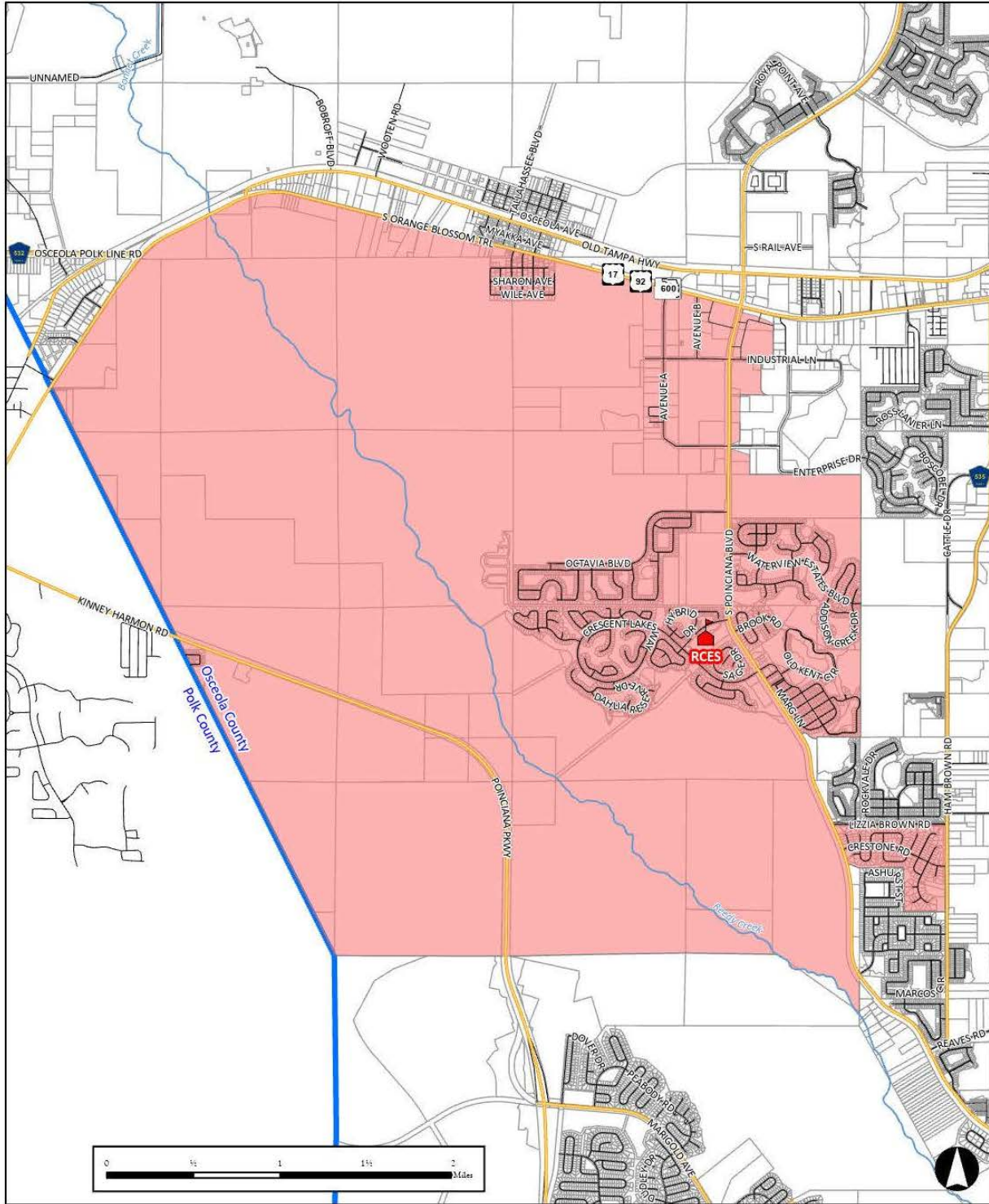
**Planning Services Department**  
The School District of Osceola County, FL

Elementary School	Attendance Zone Boundary
Highway	Counties
Toll Road	Parcels
Major Road	Administrative Placement Area
Residential Street	

**Disclaimer:** All data, information, and maps are provided "as is" without any warranty or representation of accuracy, timeliness, or completeness. The School District of Osceola County Florida (the "School District") cannot accept any responsibility for errors, omissions, or positional accuracy. The School District specifically disclaims any warranty, either express or implied, including without limitation, the implied warranties of merchantability and fitness for a particular purpose. The burden of determining accuracy, timeliness, merchantability, and fitness for a particular use rests solely on the requestor, and the requestor assumes all risk as to quality and performance. In no event will the School District or its staff be liable for any direct, indirect, incidental, special, consequential, or other damages, including without limitation, loss of profits, arising out of the use of the data, information, and maps even if the School District has been advised of the possibility of such damages. The requestor acknowledges and accepts the limitations of the data, information, and maps, including, without limitation, the fact that the data, information, and maps are dynamic and are in a constant state of maintenance, correction, and update.

Created By: E. Escobedo

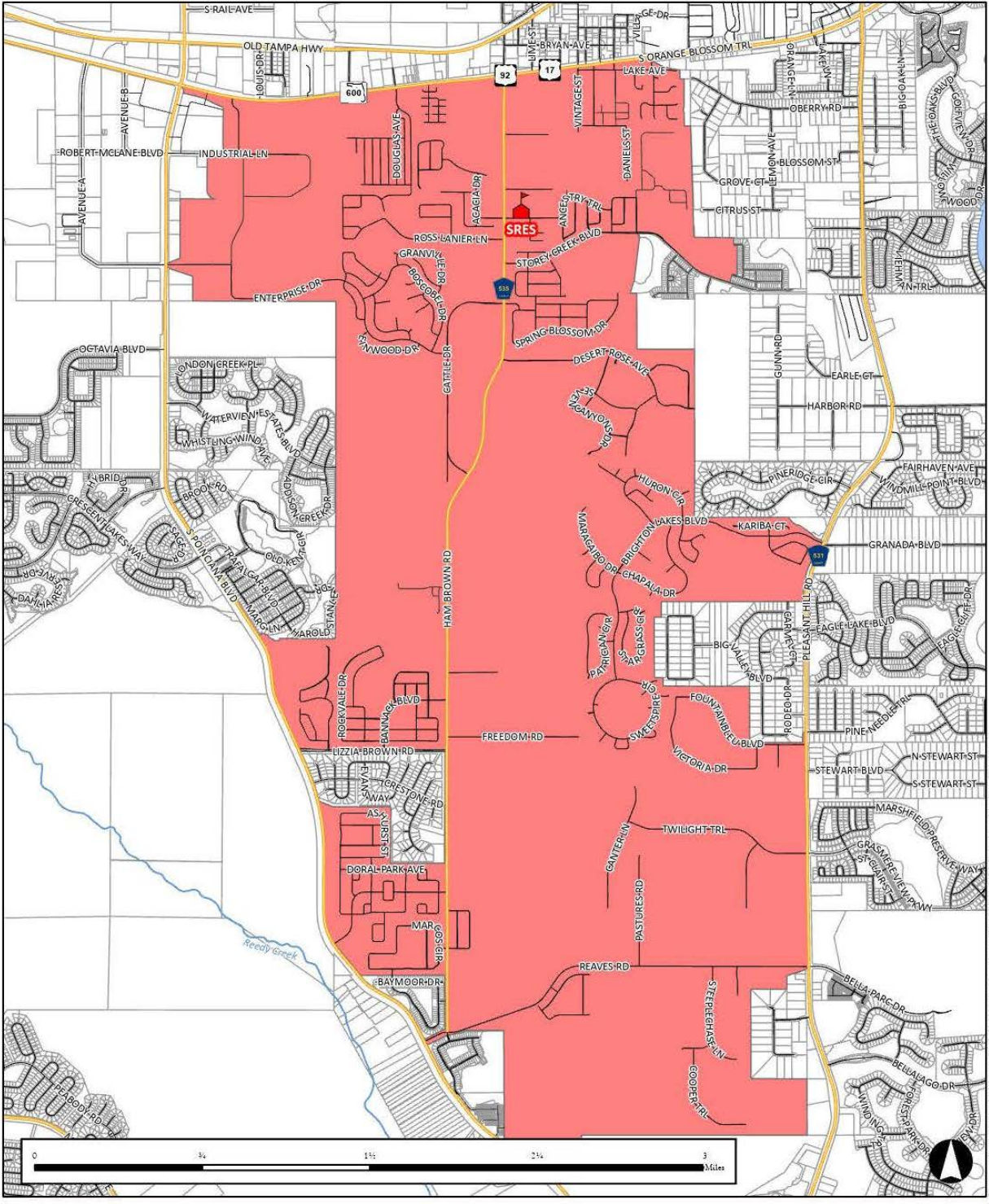




Document Path: G:\03\_MapProjects\03\_09\_ReedyCreekPlan\_Map1\_LST1423\_CombosBBReedyCreekPlan-OpenS11-13.aprx

<p><b>Reedy Creek Elementary KS'BB' Opening Option 2 Attendance Zone Boundary</b></p> <p>Valid only for the 2024/2025 School Year</p> <p><b>Planning Services Department</b> The School District of Osceola County, FL</p>	<table border="0"> <tr> <td></td> <td>Elementary School</td> <td></td> <td>Attendance Zone Boundary</td> </tr> <tr> <td></td> <td>Highway</td> <td></td> <td>Counties</td> </tr> <tr> <td></td> <td>Toll Road</td> <td></td> <td>Parcels</td> </tr> <tr> <td></td> <td>Major Road</td> <td></td> <td>Administrative Placement Area</td> </tr> <tr> <td></td> <td>Residential Street</td> <td></td> <td></td> </tr> </table>		Elementary School		Attendance Zone Boundary		Highway		Counties		Toll Road		Parcels		Major Road		Administrative Placement Area		Residential Street			<p><small>Disclaimer: All data, information, and maps are provided "as is" without any warranty or representation of accuracy, completeness, or timeliness. The School District of Osceola County, Florida (the "School District") cannot accept any responsibility for errors, omissions, or positional accuracy. The School District specifically disclaims any warranty, either express or implied, including, without limitation, the implied warranties of merchantability and fitness for a particular purpose. The burden of determining accuracy, timeliness, merchantability, and fitness for a particular use rests solely on the requestor, and the requestor assumes all risk as to quality and performance. In no event will the School District or its staff be liable for any direct, indirect, incidental, special, consequential, or other damages, including, without limitation, loss of profit, arising out of the use of the data, information, and maps even if the School District has been advised of the possibility of such damages. The requestor acknowledges and accepts the limitations of the data, information, and maps, including, without limitation, the fact that the data, information, and maps are dynamic and are in a constant state of maintenance, correction, and update.</small></p>
	Elementary School		Attendance Zone Boundary																			
	Highway		Counties																			
	Toll Road		Parcels																			
	Major Road		Administrative Placement Area																			
	Residential Street																					

Created By: E. Koushka



**Sunrise Elementary  
K8'BB' Opening  
Attendance Zone Boundary**

*Valid only for the 2024/2025 School Year*

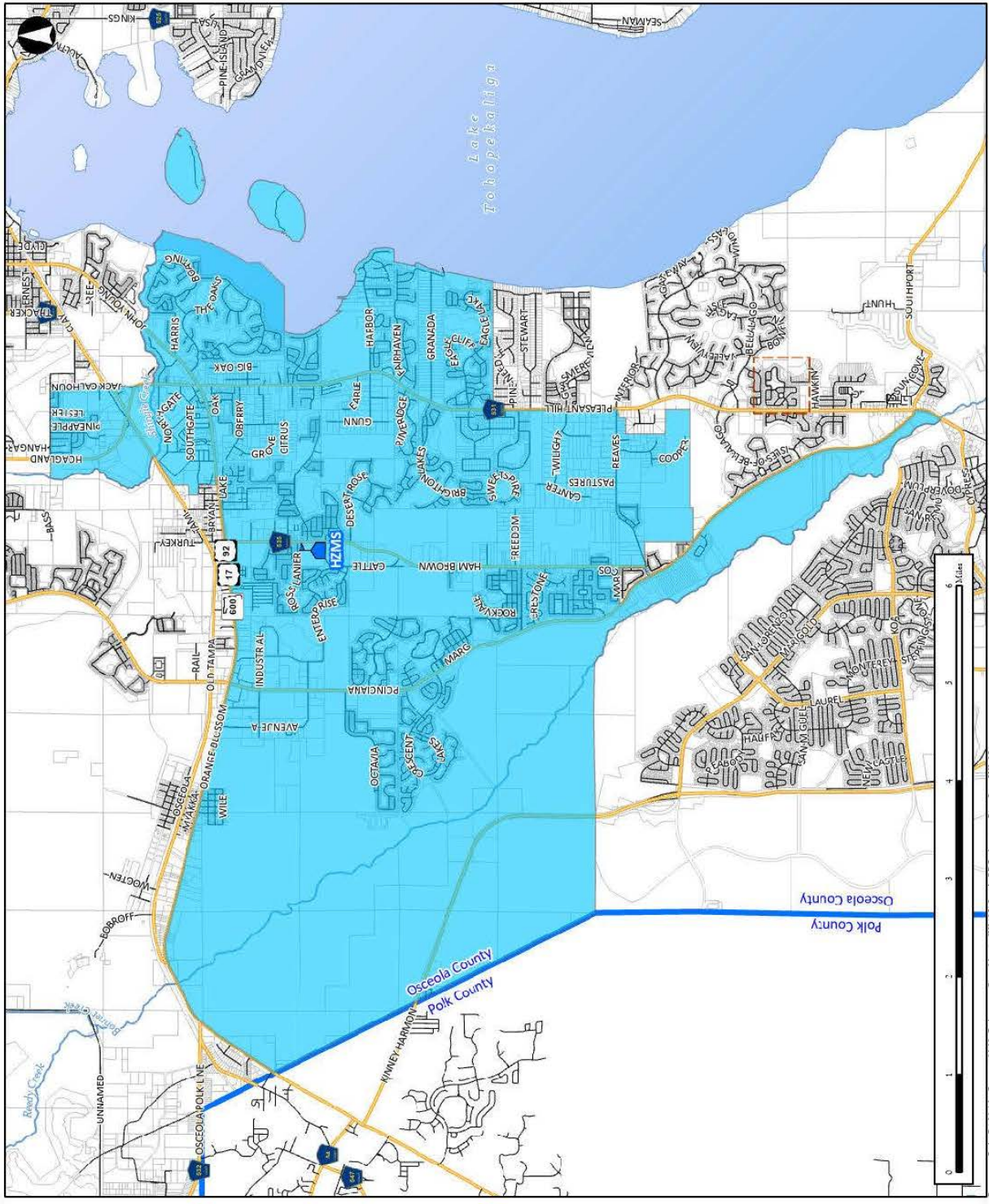
**Planning Services Department**  
The School District of Osceola County, FL

Elementary School	Attendance Zone Boundary
Highway	Counties
Toll Road	Parcels
Major Road	Administrative Placement Area
Residential Street	

Disclaimer: All data, information, and maps are provided "as is" without any warranty or representation of accuracy, timeliness, or completeness. The School District of Osceola County, Florida (the "School District") cannot accept any responsibility for errors, omissions, or positional accuracy. The School District specifically disclaims any warranty, either express or implied, including, without limitation, the implied warranties of merchantability and fitness for a particular purpose. The burden of determining accuracy, timeliness, merchantability, and fitness for a particular use rests solely on the requestor, and the requestor assumes all risk as to quality and performance. In no event will the School District or its staff be liable for any direct, indirect, incidental, special, consequential, or other damages, including, without limitation, loss of profit, arising out of the use of the data, information, and maps even if the School District has been advised of the possibility of such damages. The requestor acknowledges and accepts the limitations of the data, information, and maps, including, without limitation, the fact that the data, information, and maps are dynamic and are in a constant state of maintenance, correction, and update.

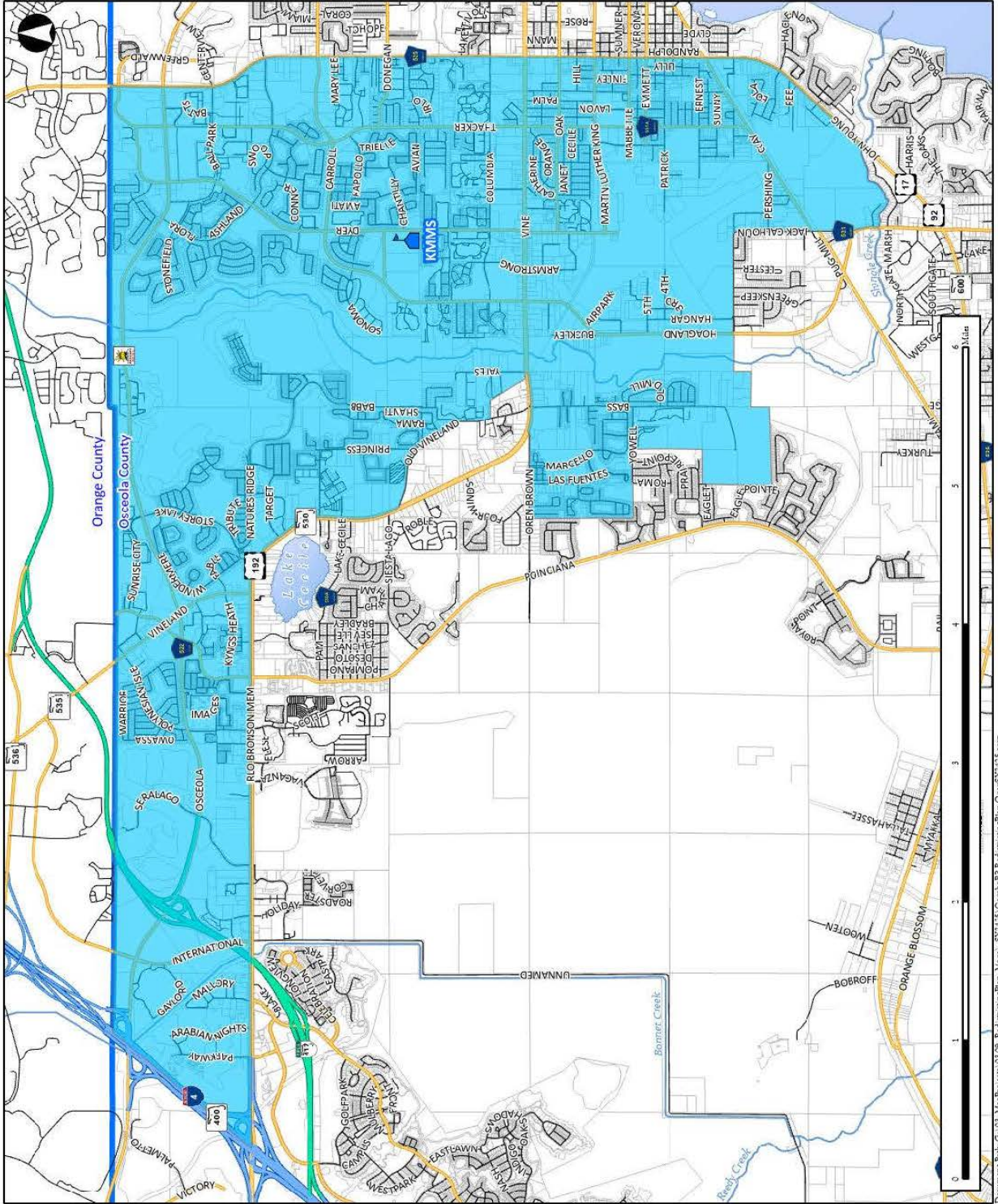
Document Path: C:\03\_MapProjects\03\_02\_24\redistricting\Plan\_Maps\ST1125\_CombosB8\_Redistricting\Plan\_CombosB8\_24.aprx  
Created By: JL\_Fourakis





<p><b>Horizon Middle KS'BB' Opening Option 2 Attendance Zone Boundary</b></p> <p>Valid only for the 2024/2025 School Year</p> <p><b>Planning Services Department</b> The School District of Osceola County, FL</p>	<p> Middle School</p> <p> Highway</p> <p> Toll Road</p> <p> Major Road</p> <p> Residential Street</p>	<p> Middle School Attendance Zone Boundary</p> <p> Counties</p> <p> Parcels</p> <p> Administrative Placement Area</p>	<p><small>Disclaimer: All data, information, and maps are provided "as is" without any warranty or representation of accuracy, timeliness, or completeness. The School District of Osceola County, Florida (the "School District") cannot accept any responsibility for errors, omissions, or positional accuracy. The School District specifically disclaims any warranty, either express or implied, including without limitation, the implied warranties of merchantability and fitness for a particular purpose. The burden of determining accuracy, timeliness, merchantability, and fitness for a particular use rests solely on the requestor, and the requestor assumes all risk as to quality and performance. In no event will the School District or its staff be liable for any direct, indirect, incidental, special, consequential, or other damages, including without limitation, loss of profits, arising out of the use of the data, information, and maps even if the School District has been advised of the possibility of such damages. The requestor acknowledges and accepts the limitations of the data, information, and maps, including without limitation, the fact that the data, information, and maps are dynamic and are in a constant state of maintenance, correction, and update.</small></p> <p><small>Created By: B. Reynolds</small></p>
--	---	---	--





**Kissimmee Middle  
KS'BB' Opening Option 2  
Attendance Zone Boundary**

Valid only for the 2024/2025 School Year

**Planning Services Department**  
The School District of Osceola County, FL

Middle School	Middle School Attendance Zone Boundary
Highway	Counties
Toll Road	Parcels
Major Road	Administrative Placement Area
Residential Street	

Disclaimer: All data, information, and maps are provided "as is" without any warranty or representation of accuracy, timeliness, or completeness. The School District of Osceola County, Florida (the "School District") cannot accept any responsibility for errors, omissions, or positional accuracy. The School District specifically disclaims any warranty, either express or implied, including, without limitation, the implied warranties of merchantability and fitness for a particular purpose. The burden of determining accuracy, timeliness, merchantability, and fitness for a particular use rests solely on the requestor, and the requestor assumes all risk as to quality and performance. In no event will the School District or its staff be liable for any direct, indirect, incidental, special, consequential, or other damages, including, without limitation, loss of profit, arising out of the use of the data, information, and maps even if the School District has been advised of the possibility of such damages. The requestor acknowledges and accepts the limitations of the data, information, and maps, including, without limitation, the fact that the data, information, and maps are dynamic and are in a constant state of maintenance, correction, and update.

Created By: E. Fortinck



2023/2024 Districtwide Redistricting  
for Elementary, Middle, and  
Combination Schools

K-8 School "BB"

## Proposed Streets to Transfer

**STREET transfer from Reedy Creek Elementary to Island Village Elementary**

Adelaide Dr	Edenshire Way	Mallory Cir	Seralago Blvd
Ambergris Loop	Feather Ln	Mangrove Aly	Smoke Signal Cir
Arabian Nights Blvd	Flying Eagle Ln	Micco St	Spaceport Ct
Arrow Dr	Gaylord Way	Moccasin Dr	Spirit Dr
Arrowhead Ln	Hart Ave	N Poinciana Blvd	Staniard Dr
Barefoot Path	Hawk Dr	Owassa Ct	State Rd 417
Baseball And Boardwalk Ct	Headdress Dr	Oxford Dr	Thunder Cloud Dr
Bear Path	Holiday Trl	Paradise Cay Cir	Time Ln
Bearclaw Way	Images Cir	Parkway Blvd	Tocoa Cir
Bonfire Beach Dr	Imaginary Way	Peace Pipe Dr	Tomahawk Dr
Bosque Ave	Interior St	Pinto Dr	Universal Studios Ct
Broken Arrow Dr	International Dr	Polynesian Isle Blvd	Urban Ln
Calypso Cay Way	Jade St	Prado Ter	Vineland Rd
City Ln	Jolly Mon Dr	Regatta Dr	W Irlo Bronson Mem Hwy
Compass Bay Dr	Killarney Way	Rosie Ogrady Ct	W Osceola Pkwy
Coquina Ct	Kyngs Heath Rd	Running Bear Way	Warrior Ln
Council Ct	Limbo Ln	Running Deer Path	Water Mania Ct
Crown Haven Dr	Locksley Ln	Sadina St	Wet N Wild Ct
Cypress Gardens Ct	Lonesome Dove Dr	Safari Trl	White Dove Ln
Diplomat Ct	Longwater Blvd	San Juan Cir	Wild Orchid Way
Disney Mgm Studio Ct	Lucayan Harbour Cir	Sea World Ct	
Dominica Dr	Magic Kingdom Ct	Seaview Castle Dr	

**STREET transfer from Central Avenue Elementary to K8 "BB"**

Alaqua Trl	Four Winds Blvd	S Roma Way	W Irlo Bronson Mem Hwy
Alexis Dr	Indian Point Cir	Seneca Point Ct	W Vine St
Chappell Ct	North Wind Blvd	Seneca Point Trl	West Wind Blvd
Cheyenne Point Trl	Oakbrook Ct	South Wind Blvd	Windwood Dr
Dakota Point Ct	Osceola Point Trl	Stetson Ct	Yowell Rd
East Wind Blvd	Pliny Ct	Sunny Oak Trl	
Ellery Ln	Prairie Point Blvd	Via Veneto Ct	

**STREET transfer from Flora Ridge Elementary to K8 "BB"**

Asbury Ct	E Roble Dr	Pinemont St	Solamar Ave
Babb Rd	Elmo Cir	Polyantha Ct	St Georges Ct
Berkshire Ct	Encantado Way	Primero Ct	Sun Village Blvd
Burgess Pt	Floribunda Ct	Primero Dr	Sweetwater Club Cir
Cameron Preserve Cir	Foothill Dr	Quemar Ct	Tangelo Cir
Cedro Dr	Grandiflora Dr	Quemar Dr	Tennyson Ct
Chadwick Cir	Huxley Ct	Rio Ct	Vecino Loop
Cirento Dr	Little Egret Rd	Roble Ct	W Irlo Bronson Mem Hwy
Creekmont Ln	Lounsbury Ct	Roble Dr	W Roble Dr
Cross Timbers Pl	Naranja Way	Rochelle Ave	W Vine St
Davenport Cir	Old Vineland Rd	Siesta Ct	White Oak Cir
Dunmore Ln	Palma Ct	Siesta Lago Dr	Yates Rd
E Roble Ct	Palma Dr	Siesta Ln	Zara Ct

**STREET transfer from Sunrise Elementary to K8 "BB"**

Albert Dr	Eagle Pointe Blvd	Lime St	Soaring Eagle Ln
Ann Dr	Eagle Pointe North	Louis Dr	South Beach Cir
Barefoot Beach Way	Eagle Pointe South	Madiera Beach Blvd	Sun Station Ave
Blue Diamond St	Eaglet Ln	Mango St	Sun Way Ave
Brentwood Dr	Edensbridge Ln	Maple Cross Dr	Sunrail Park Blvd
Broad St	Emerald Green Ct	Marathon Key Dr	Tami Ln
Bryan Ave	Evergreen St	Marks St	Tangerine St
Bryant St	Falcon Ave	N Poinciana Blvd	Terra Esmeralda Dr
Castaway Beach Way	Falcon Trace Cir	Oak View Ave	Terra Verde Blvd
Center Rail St	Flagler Beach Way	Old Tampa Hwy	Tourmaline Dr
Coral Castle Dr	Gettysburg Ct	Oren Brown Rd	Turkey Ln
Crestridge Dr	Golden Beach Ct	Ormond Beach Way	Vero Beach Pl
Crystal Garden Blvd	Golden Knight Blvd	Peach St	Vintage St
Cumbrian Lakes Ct	Hawk Trace Loop	Philadelphia Cir	Winding Cypress Ct
Cumbrian Lakes Dr	Helen Ave	Pompano Beach Dr	Winding Hollow Ct
Declaration Dr	Hemingway House St	Prey Ct	Winding Willow Ct
Delray Beach Ct	Hideaway Beach Ln	Ruby Red Ln	Worchester Dr
Durwood St	Judith Dr	S Poinciana Blvd	
Eagle Peak Dr	Liberty Hall Dr	S Rail Ave	

**STREET transfer from Reedy Creek Elementary to K8 "BB"**

Active Way	Forehand Rd	Mystic Brook Way	Sanchez Dr
Apron Rd	Gathering Ct	N Poinciana Blvd	Sandy Oak Dr
Assembly Ct	Gathering Dr	Noble Cypress St	Sandy Ridge Dr
Assembly Ln	Gathering Loop	Nocatee St	Santos Rd
Astina St	Grand Hammock Ct	Northern Harrier Way	Seven Eagles Ct
Bellamy Dr	Greenbank Ln	Oconee St	Seven Eagles Way
Biscayne Rd	Greenfield Loop	Okaloosa Ave	Seville Dr
Blue Hammock Ct	Greens Ln	Okaloosa Ct	Soiree Way
Bobroff Blvd	Greenway Rd	Old Tampa Hwy	Somersworth Dr
Boyden Way	Hardway Ct	Oren Brown Rd	Sparkling Ct
Bradley Dr	Haverhill Way	Osceola Ave	Sparkling Water Way
Bridgeview Dr	Healing Pl	Osceola Polk Line Rd	Spectrum Dr
Bud Rd	Heritage Crossing Ct	Palmetto Rd	Spine Rd
Cabana Ct	Heritage Crossing Way	Pam Rd	Sullivan Rd
Caloosa St	Hibiscus Rd	Penniwa St	Sunset View Cir
Carolina Wren Dr	Hicpochee St	Pompano Dr	Tallahassee Blvd
Cedar Bay Ter	Howison Rd	Ponce De Leon Rd	Titian Ct
Centre Court Ln	Immokalee St	Poplin St	Tomoka Ave
Centre Court Ridge Dr	Jennifer Ln	Prime Cir	Tradition Blvd
Christopher Ct	Karson Korners Ln	Purple Martin Ln	Twilight Ct
Conifer Cone Dr	Laguna Bay Cir	Radiant St	Velleux St
Cookie Ln	Linkside Loop	Red Blossom Ln	Villanova Rd
Corolla Ct	Manatee St	Regal King Dr	Wakeview Dr
Delwin Ln	Marlow Pl	Remick Ct	Watson Ct
Desoto Dr	Marsh Meadow Ln	Reunion Blvd	Wauchula St
Devereaux St	Mini Mountain Rd	Reunion Village Blvd	Whisper Way
Dusk Ct	Molona St	Royal Point Ave	Wispy Cypress Dr
Euston Dr	Montzen Rd	Royal View Ter	Woodmont Blvd
Excitement Dr	Mourning Dove Cir	Rumney Ln	Woody Cypress Dr
Fairview Cir	Myakka Ave	S Old Lake Wilson Rd	Wooten Rd



**STREET transfer from Horizon Middle School to K8 "BB"**

Active Way	Excitement Dr	Molona St	Sandy Oak Dr
Albert Dr	Fairview Cir	Montzen Rd	Sandy Ridge Dr
Ann Dr	Falcon Trace Cir	Mourning Dove Cir	Santos Rd
Apron Rd	Forehand Rd	Myakka Ave	Seven Eagles Ct
Assembly Ct	Gathering Ct	Mystic Brook Way	Seven Eagles Way
Assembly Ln	Gathering Dr	N Poinciana Blvd	Seville Dr
Astina St	Gathering Loop	Noble Cypress St	Soiree Way
Bellamy Dr	Golden Knight Blvd	Nocatee St	Somersworth Dr
Biscayne Rd	Grand Hammock Ct	Northern Harrier Way	Sparkling Ct
Blue Hammock Ct	Greenbank Ln	Oak View Ave	Sparkling Water Way
Bobroff Blvd	Greenfield Loop	Oconee St	Spectrum Dr
Boyden Way	Greens Ln	Okaloosa Ave	Spine Rd
Bradley Dr	Greenway Rd	Okaloosa Ct	Sullivan Rd
Brentwood Dr	Hardway Ct	Old Tampa Hwy	Sun Station Ave
Bridgeview Dr	Haverhill Way	Oren Brown Rd	Sun Way Ave
Broad St	Hawk Trace Loop	Osceola Ave	Sunrail Park Blvd
Bryan Ave	Healing Pl	Osceola Polk Line Rd	Sunset View Cir
Bryant St	Helen Ave	Palmetto Rd	Tallahassee Blvd
Bud Rd	Heritage Crossing Ct	Pam Rd	Tami Ln
Cabana Ct	Heritage Crossing Way	Peach St	Tangerine St
Caloosa St	Hibiscus Rd	Penniwa St	Titian Ct
Carolina Wren Dr	Hicpochee St	Pompano Dr	Tomoka Ave
Cedar Bay Ter	Howison Rd	Ponce De Leon Rd	Tradition Blvd
Center Rail St	Immokalee St	Poplin St	Turkey Ln
Centre Court Ln	Interstate 4	Prime Cir	Twilight Ct
Centre Court Ridge Dr	Jennifer Ln	Purple Martin Ln	Velleux St
Christopher Ct	Judith Dr	Radiant St	Villanova Rd
Conifer Cone Dr	Karson Korner Ln	Red Blossom Ln	Vintage St
Cookie Ln	Laguna Bay Cir	Regal King Dr	Wakeview Dr
Corolla Ct	Lime St	Remick Ct	Watson Ct
Crestridge Dr	Linkside Loop	Reunion Blvd	Wauchula St
Delwin Ln	Louis Dr	Reunion Village Blvd	Whisper Way
Desoto Dr	Manatee St	Royal Point Ave	Wispy Cypress Dr
Devereaux St	Mango St	Royal View Ter	Woodmont Blvd
Durwood St	Maple Cross Dr	Rumney Ln	Woody Cypress Dr
Dusk Ct	Marks St	S Old Lake Wilson Rd	Wooten Rd
Edensbridge Ln	Marlow Pl	S Poinciana Blvd	Worcester Dr
Euston Dr	Marsh Meadow Ln	S Rail Ave	
Evergreen St	Mini Mountain Rd	Sanchez Dr	

**STREET transfer from Kissimmee Middle School to K8 "BB"**

Alaqua Trl	Eagle Pointe South	Oren Brown Rd	Soaring Eagle Ln
Alexis Dr	Eaglet Ln	Ormond Beach Way	Solamar Ave
Asbury Ct	East Wind Blvd	Osceola Point Trl	South Beach Cir
Barefoot Beach Way	Ellery Ln	Palma Ct	South Wind Blvd
Berkshire Ct	Elmo Cir	Palma Dr	St Georges Ct
Blue Diamond St	Emerald Green Ct	Philadelphia Cir	Stetson Ct
Burgess Pt	Encantado Way	Pliny Ct	Sun Village Blvd
Castaway Beach Way	Falcon Ave	Pompano Beach Dr	Sunny Oak Trl
Cedro Dr	Flagler Beach Way	Prairie Point Blvd	Sweetwater Club Cir
Chadwick Cir	Four Winds Blvd	Prey Ct	Tangelo Cir
Chappell Ct	Gettysburg Ct	Primero Ct	Tennyson Ct
Cheyenne Point Trl	Golden Beach Ct	Primero Dr	Terra Esmeralda Dr
Cirento Dr	Hemingway House St	Quemar Ct	Terra Verde Blvd
Coral Castle Dr	Hideaway Beach Ln	Quemar Dr	Tourmaline Dr
Crystal Garden Blvd	Huxley Ct	Rio Ct	Vero Beach Pl
Cumbrian Lakes Ct	Indian Point Blvd	Roble Ct	Via Veneto Ct
Cumbrian Lakes Dr	Indian Point Cir	Roble Dr	W Irlo Bronson Mem Hwy
Dakota Point Ct	Interior St	Rochelle Ave	W Roble Dr
Davenport Cir	Liberty Hall Dr	Royal Bay Blvd	W Vine St
Declaration Dr	Lounsbury Ct	Ruby Red Ln	West Wind Blvd
Delray Beach Ct	Madiera Beach Blvd	S Poinciana Blvd	Winding Cypress Ct
Dunmore Ln	Marathon Key Dr	S Roma Way	Winding Hollow Ct
E Roble Ct	N Poinciana Blvd	Seneca Point Ct	Winding Willow Ct
E Roble Dr	Naranja Way	Seneca Point Trl	Windwood Dr
Eagle Peak Dr	North Wind Blvd	Siesta Ct	Yowell Rd
Eagle Pointe Blvd	Oakbrook Ct	Siesta Lago Dr	Zara Ct
Eagle Pointe North	Old Vineland Rd	Siesta Ln	